

FOR LEASE - SHOPKO Newport Hwy, Spokane, WA

**AVAILABLE
94,183 SF**



THIS STORE IS STILL OPEN - TOUR AS A CUSTOMER AND DO NOT INFORM ANYONE IN STORE

PROPERTY FEATURES:

- Shopko - 94,183 SF on 7.4 acres
- Located on the NEC of Newport Hwy & Holland Ave @ 9520 N. Newport Hwy
- Divisible Box - pads are separate properties
- Cross access to Northpointe Plaza
- Strong Demographics
- 35,000 CPD
- Rent - \$9.50psf (expect an increase if extensive Tenant improvements required)



**AVAILABLE IN APRIL/MAY
EXCELLENT SIGNAGE**

DEMOGRAPHICS	1 MILE	3 MILES	5 MILES
POPULATION			
2016 Population	9,534	62,606	155,308
2021 Projected Population	9,665	64,989	160,148
HOUSEHOLDS			
2016 Households	3,451	24,910	61,079
2021 Projected Households	3,485	25,785	62,784
2016 Median HH Income	\$43,772	\$46,454	\$49,094
2016 Per Capita Income	\$24,943	\$25,976	\$25,483
2016 Average HH Income	\$56,869	\$62,800	\$63,506

SeaPac

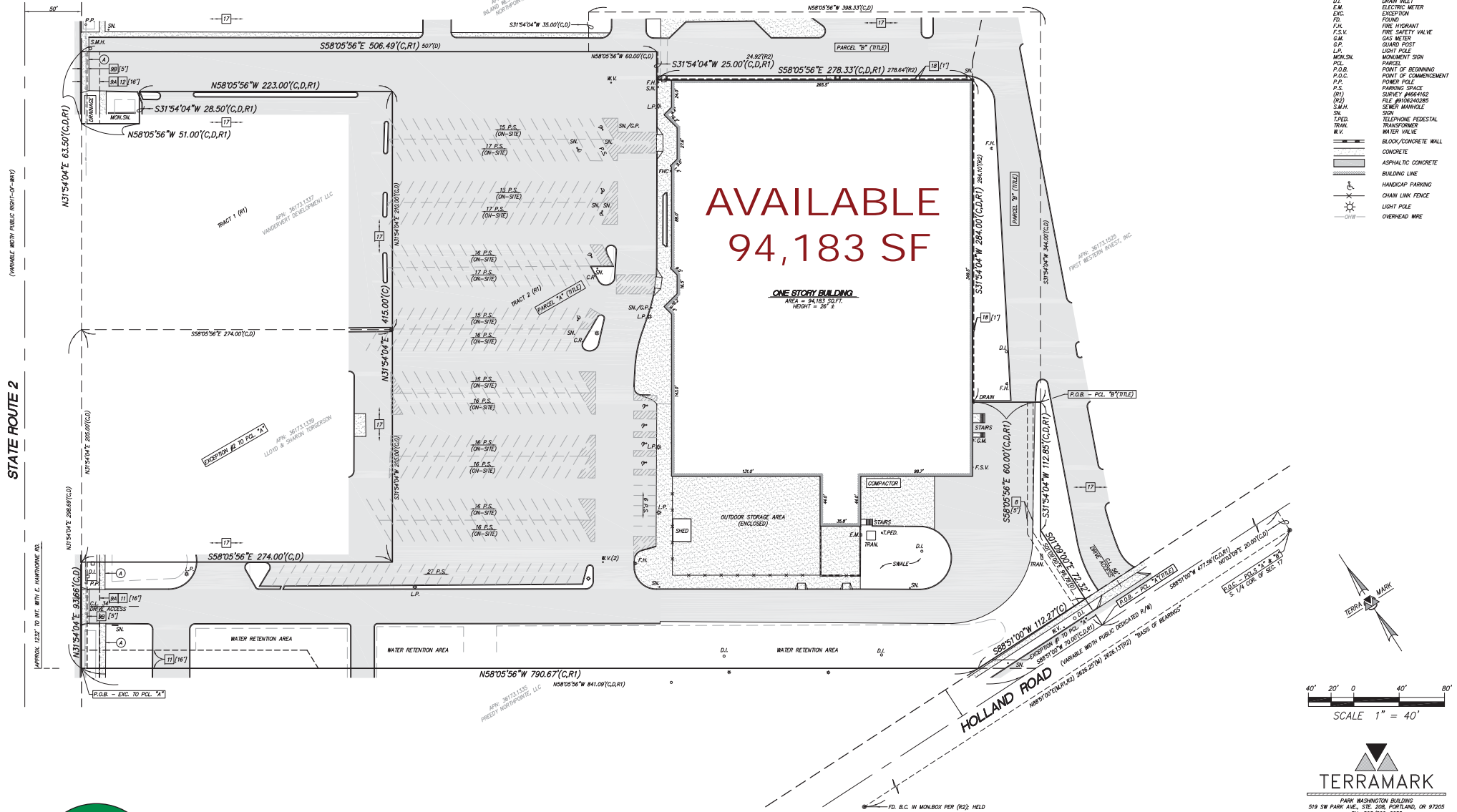
Jeffrey Rosen

Seattle Pacific Realty, Inc.
206-689-0237 Direct
206-419-0320 Cell
Rosen@seapac.com

Courtesy to Brokers

FOR LEASE - SHOPKO 9520 N. Newport Hwy, Spokane, WA

THIS STORE IS STILL OPEN - TOUR AS A CUSTOMER AND DO NOT INFORM ANYONE IN STORE



Jeffrey Rosen
Seattle Pacific Realty, Inc.
206-689-0237 Direct
206-419-0320 Cell
Rosen@sepac.com

Courtesy to Brokers